

8: TRANSPORT IN HUMANS(2)

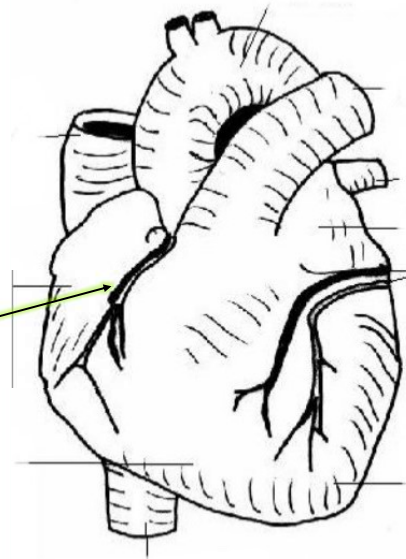
體內物質的轉運(2)

1

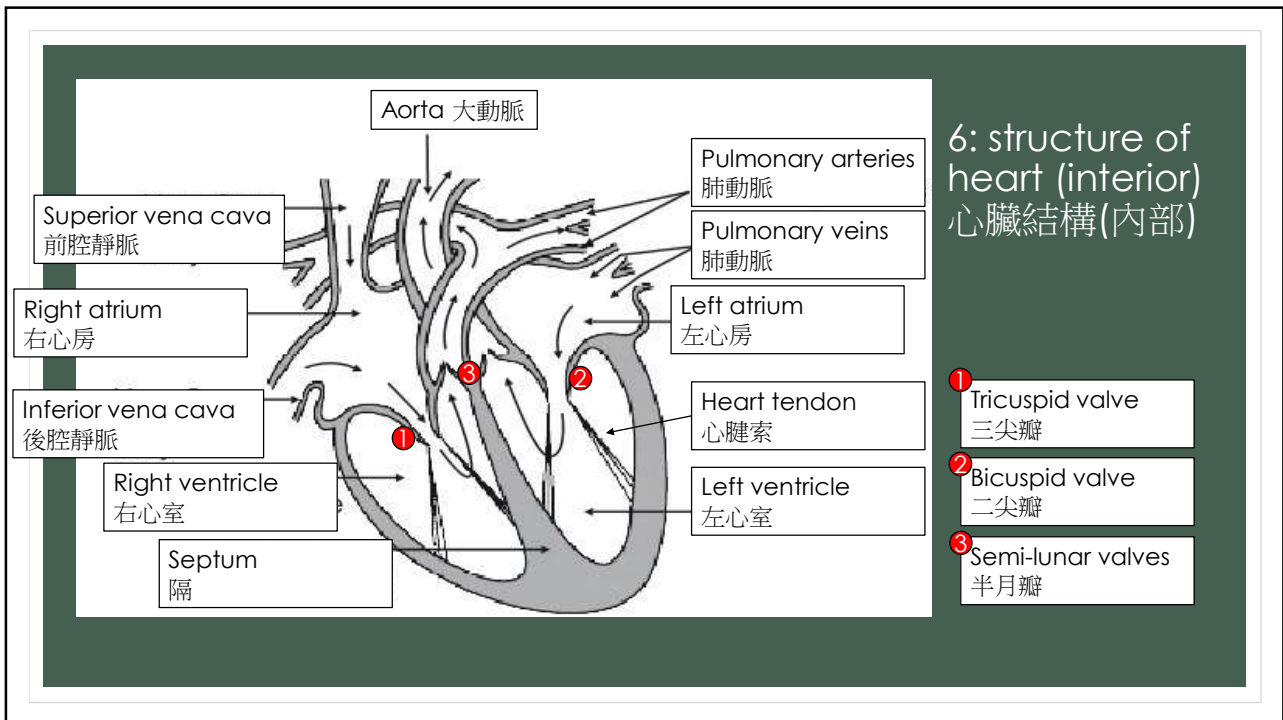
6: structure of heart (exterior)

心臟結構(外部)

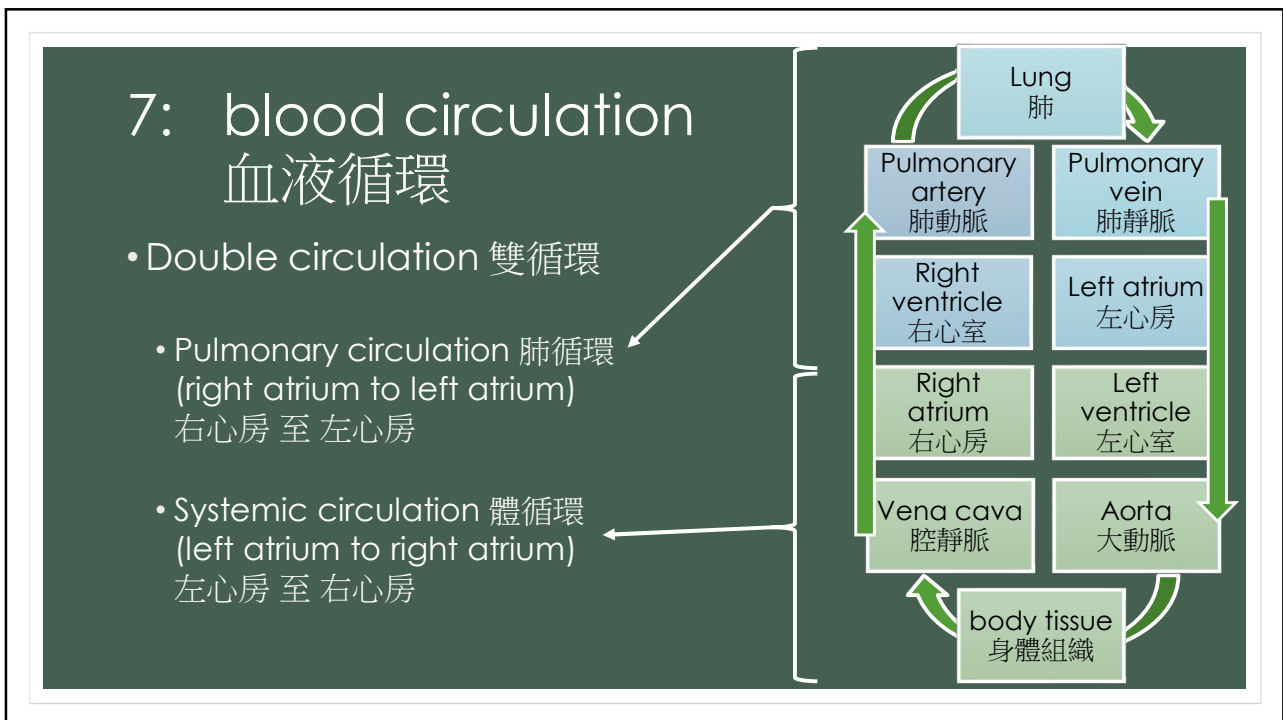
- mainly made up of cardiac muscles
主要由心肌組成
 - Atria are thinner, ventricles are thicker
心房較薄，心室較厚
- Coronary arteries and Coronary veins
冠狀動脈 及 冠狀靜脈



11



12



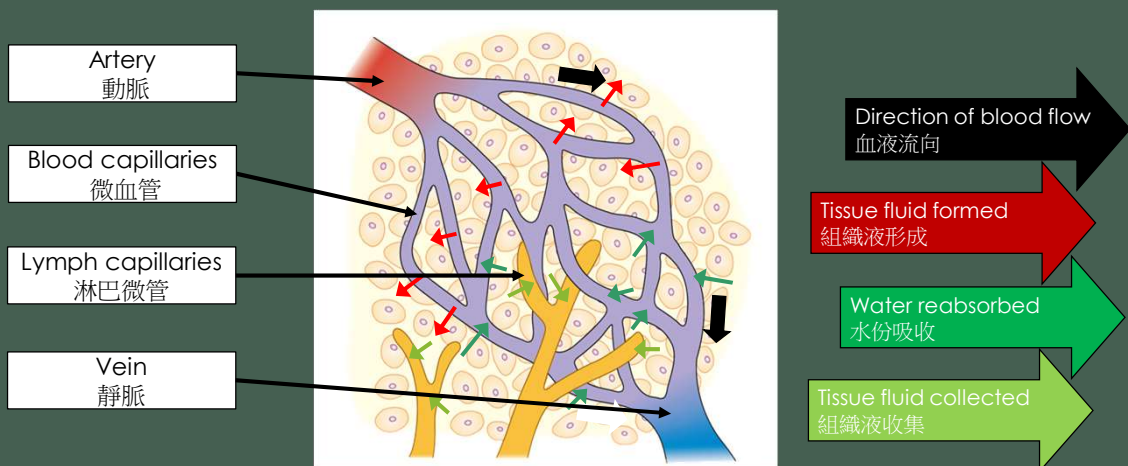
13

8: lymphatic system 淋巴系統

- What is lymph? 淋巴是什麼？
 - Tissue fluid is formed by high blood pressure of blood capillaries
組織液是微血管的高血壓擠出形成
 - Tissue fluid = plasma - plasma protein + WBC
組織液 = 血漿 - 血漿蛋白 + 白血細胞
 - Some water in tissue fluid is absorbed back into blood capillaries
組織液的部分水分會由微血管吸收
 - Tissue fluid collected by lymph capillaries → become lymph
組織液會由淋巴微管收集，形成淋巴。

14

8: lymphatic system 淋巴系統



15

8: lymphatic system 淋巴系統

- Lymphatic system structure 淋巴系統結構
- Lymph vessel 淋巴管
 - Structure similar to vein 構造與靜脈相近
 - Driven by skeletal muscle 由骨骼肌驅動
 - From body tissue to vena cava 由組織流往腔靜脈
- Lymph node 淋巴結
 - intervals along lymph vessels 沿著淋巴管隆起的部分
 - filled with white blood cells 充滿白血細胞

16

8: lymphatic system 淋巴系統

- Function 功能
 - return excess tissue fluid to the blood circulation 把多餘的組織液帶回循環系統
 - Body defense (in lymph node) 身體免疫 (淋巴結)
 - transport lipid to the blood. (from the lacteals) 運送脂質至血液 (從乳糜管)

17