

UNIT 6

Animals Asia

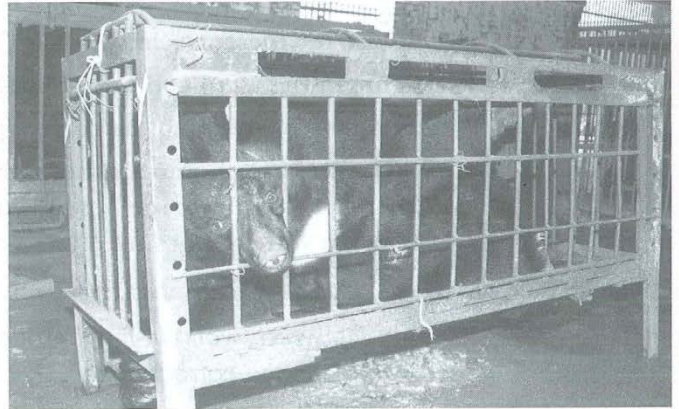
In 1993, Animals Asia founder Jill Robinson was visiting China when she dropped in on a bear farm in one of the southern provinces. This was her horrified reaction to what she saw on that memorable day:

5 *'It's a hell hole for animals. They literally can't move. They can't stand up. They can't turn around. They can just about put their paws out of the cage to feed themselves. I wish I were able to help them.'*

The bears that Jill saw on that day in 1993 were Black Asiatic bears. They were being kept in captivity in order to collect bile for use in Chinese medicine. Although Jill had worked for animal charities for several years, even she was shocked by what she found. To address the issue, she decided to quit her job and set up a new charity called Animals Asia — a charity whose initial focus was finding a way to end this cruel practice.

The charity immediately began work in China — publicising the cruelty, lobbying the Government and establishing connections with sympathetic organisations. Soon the hard work paid off and the charity began to get results. In 1995, officials closed down the original farm that Jill had visited and handed over the bears to Jill and the Animals Asia rescue team. These bears can now be found at a sanctuary in Pan Yu (番禺).

Later, in 2000, the charity signed an agreement with the Chinese authorities to rescue 500 bears in Sichuan province, to work towards eliminating bear farming in China and to promote herbal alternatives to bear bile.



Since 2000, the Government has closed down over 40 bear farms and released over 184 bears into the care of Animals Asia's rescue centre in Sichuan.

35 Although the bears often arrive in bad shape, with many of them ill and emaciated, they usually recover to full health with the help of vets and lots of tender, loving care.

What is bile and how is it collected?

40 Bile is a bitter, green-brown liquid that is produced by the liver and stored in an organ called the gall bladder. It helps the body to digest fats. It is used in Chinese medicine to treat stomach diseases and to dissolve gallstones and kidney stones.

45 Bile used to be collected by hunting wild bears. These days, it is usually collected on bear farms by inserting a tube into the bears' gall bladders. The practice is extremely cruel since the bears cannot move around afterwards and the tubes often become dirty and cause infections.

50

A message from Animals Asia

Although there are now far fewer bear farms in China than in the past, there is still a lot of work to be done. If you want to support our work or simply find out more about us, please visit our web site at www.animalsasia.org.

A Read the page opposite and then answer the questions below. For multiple choice questions, circle the letter. For other questions, write your answers in the spaces provided.

- 1 In line 5, what does 'They' refer to? _____
- 2 What experience made Jill Robinson set up Animals Asia? _____

- 3 In line 17, what does 'this cruel practice' refer to? _____

- 4 Why would we expect Animals Asia to favour the promotion of herbal alternatives to bear bile? _____
- 5 How did bear bile used to be collected in the past? Do you think this is more or less cruel than keeping bears on farms? Why? _____

- 6 Jill Robinson's experience in 1993 was ...
 - A amazing.
 - B horrified.
 - C shocking.
 - D interesting.
- 7 In line 22, the 'officials' probably worked for ...
 - A Animals Asia.
 - B Jill Robinson.
 - C the Chinese Government.
 - D the owner of the bear farm.
- 8 When a new bear arrives at the rescue centre, the vets probably need to ...
 - A clean the bear's tube.
 - B remove the bear's tube.
 - C help the bear lose weight.
 - D help the bear digest fats again.
- 9 According to the article, which of the following statements is not true?
 - A Bile smells bad.
 - B Bile is green-brown in colour.
 - C Bile is stored in the gall bladder.
 - D Bile is used in Chinese medicine.
- 10 The sentences below are possible summaries for the third, fourth and fifth paragraphs of the article. From the six sentences below (A–F), choose the most suitable sentence for each paragraph. Write the letters in the spaces provided.
 - A After seeing the bad treatment of the bears, Jill Robinson set up a new charity and started work in China to help the bears.
 - B Animals Asia signed an important agreement with the Chinese authorities in 2000.
 - C Animals Asia used publicity to help them achieve success.
 - D Jill Robinson was an experienced charity worker and therefore knew how to set up a charity.
 - E The charity's first major success was in 1995 when the farm that Jill visited in 1993 was closed down and the bears were handed over to the charity.
 - F The charity strongly supports using herbs instead of bear bile in Chinese medicine.
 - a) Paragraph 3 _____
 - b) Paragraph 4 _____
 - c) Paragraph 5 _____